



Application Guide

XR-APG05-EN

Low OD Ambient Operation

Unit Mounting

Minimum Clearances



For Trane XR Model Family

Purpose:

The purpose of this bulletin is to provide cumulative application criteria as related to the Trane XR style cooling units and heat pumps.

This bulletin discusses:

- I. Off Season Cooling Operation
- II. Unit Mounting
- III. Minimum Operating Clearances

ISSUED BY:

Product Training and Application Department
Trane
Tyler, Texas

Section I - Off Season Cooling Operation:

The Trane XR - R410 models, as well as the R-22 models may be operated in the cooling mode to 55°F as shipped from the factory when applied with an indoor FCCV. Where required, these units, with appropriate accessories, may be applied to operate at outdoor temperatures below 55°F

Please refer to the accessory table below when determining if the XR model will operate at the specified conditions and required accessories

NOTE: 5 ton units may be applied only with TXV's

Model Family	Ambient Temperature in Cooling Mode Operation									
	55 F	45 F	30 F			0 F				
XR12 - R410A Cooling Unit	As Shipped	TXV	AY28X079	TXV	CCHT	Not Approved				
XR12 - R-22 Cooling Unit	As Shipped	TXV	AY28X079	TXV	CCHT	BAYLOAM103	Non Bleed TXV	CCHT	Quick Start Accessory*	Solenoid Valve**
XR11 Cooling 1.5 to 2.0 Ton	As Shipped	TXV	AY28X079	TXV	CCHT	Not Approved				
XR11 2.5 - 5 ton	As Shipped	TXV	AY28X079	TXV	CCHT	BAYLOAM103	Non Bleed TXV	CCHT	Quick Start Accessory*	Solenoid Valve**
XR12 - R410A Heat Pump	As Shipped	TXV	AY28X084	TXV	CCHT	Not Approved				
XR12 - R-22 Heat Pump	As Shipped	TXV	AY28X084	TXV	CCHT	BAYLOAM103	Non Bleed TXV	CCHT	Quick Start Accessory*	
XR11 Heat Pump	As Shipped	TXV	AY28X084	TXV	CCHT	BAYLOAM103	Non Bleed TXV	CCHT	Quick Start Accessory*	

* Unit requires start accessory only if it is not factory installed. Check general specifications located in product data to determine if unit is equipped with factory installed quick start components.

* *Solenoid valve required if:

1. Liquid line is one size larger than factory connection. (example: factory connection is 3/8" and the existing liquid line is 1/2") Please refer to publication 32-3009-03 or latest edition for approved line sizes.
2. Off cycle time will be longer than 30 minutes during low ambient cooling operation.

Compressor Sump Heaters:

Reciprocating Compressor: BAYCCHT300

Scroll Compressor: BAYCCHT301

Evaporator Defrost Control Kits:

AY28X079: Cooling only

AY28X084: Heat pumps

Head Pressure Controller:

BAYLOAM103: Approved heat pumps and cooling units

Windshields:

Windshields are required and shall be provided in areas where winds will impact the unit's operation in cooling during low ambient operation. Please refer to page 15 for more information regarding windshields.

More Information:

As noted in the above table, the XR12 style units that utilize Refrigerant 22 may be operated to 0°F if necessary, by applying the BAYLOAM103 head pressure controller and other required accessories. The BAYLOAM103 is a newly developed head pressure controller that cycles the OD fan as needed to maintain liquid line temperature as set by the DIP switches located on the control. There is no need to change the outdoor fan motor on approved products since the controller does not vary the frequency to the motor. For more information, the installation guide, publication number, 18-HE46D1-1 should be consulted.

XR Crankcase Heat and Start Kit Matrix:

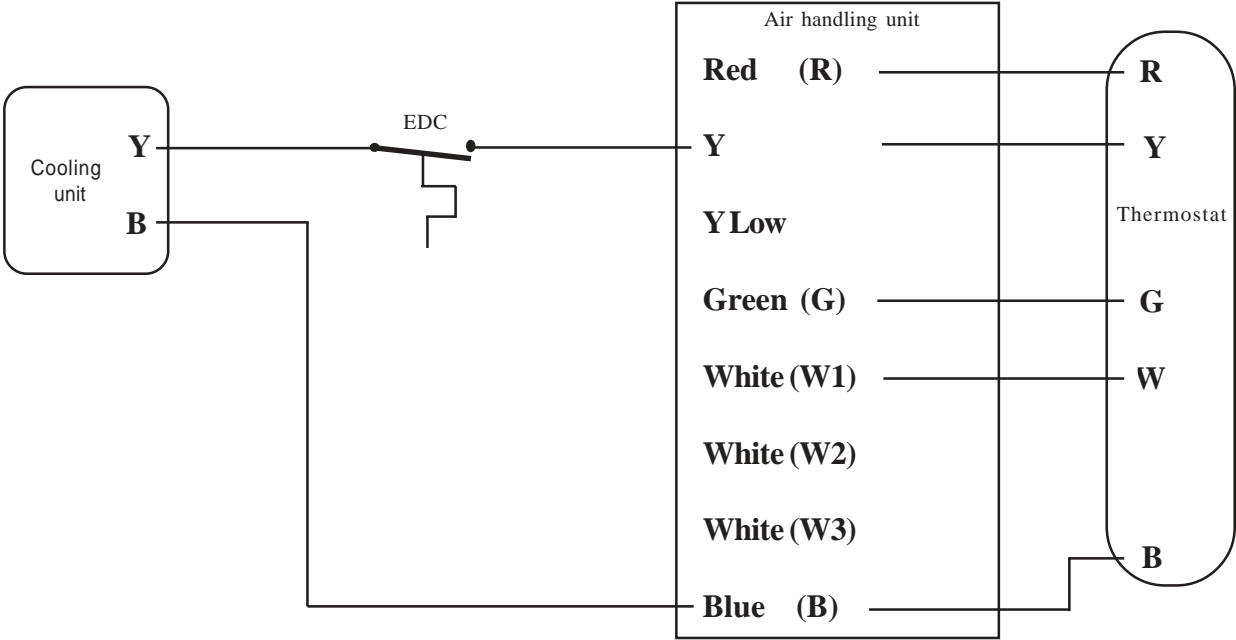
This matrix is provided to supply information regarding current products. However, due to product improvement, it is recommended to refer to product data for most current information regarding factory installed features.

Table print date March 23, 2004

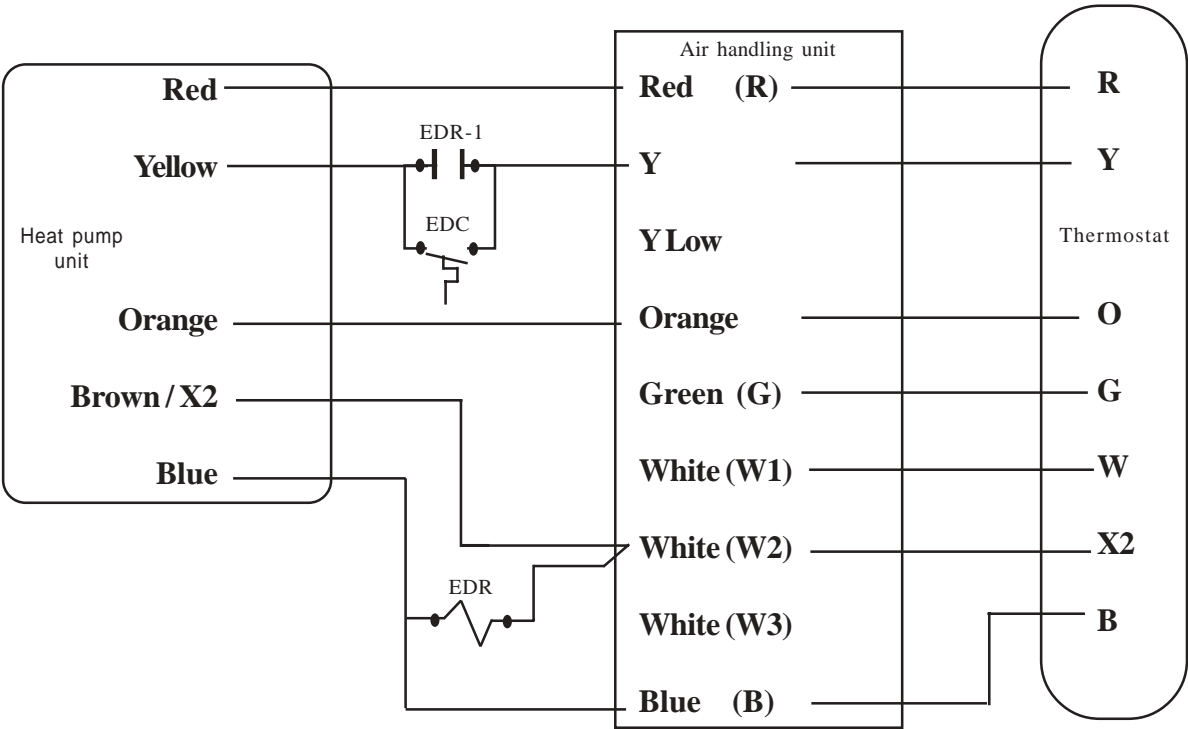
Unit Model	Required CCHT	Required Hard Start Kit	Unit Model	Required CCHT	Required Hard Start Kit
4TTR2018A1000A	BAYCCHT300	Factory Installed	4TWR2018A1000A	Factory Installed	Factory Installed
4TTR2024A1000A	BAYCCHT300	Factory Installed	4TWR2024A1000A	Factory Installed	Factory Installed
4TTR2030A1000A	BAYCCHT301	BAYKSKT260	4TWR2030A1000A	BAYCCHT301	BAYKSKT260
4TTR2036A1000A	BAYCCHT301	BAYKSKT260	4TWR2036A1000A	BAYCCHT301	BAYKSKT260
4TTR2042A1000A	BAYCCHT301	BAYKSKT260	4TWR2042A1000A	BAYCCHT301	BAYKSKT260
4TTR2048A1000A	BAYCCHT301	BAYKSKT260	4TWR2048A1000A	BAYCCHT301	BAYKSKT260
4TTR2060A1000A	BAYCCHT301	Factory Installed	4TWR2060A1000A	Factory Installed	Factory Installed
2TTR2018A1000A	BAYCCHT300	Factory Installed	2TWR2018A1000A	Factory Installed	Factory Installed
2TTR2024A1000A	BAYCCHT300	Factory Installed	2TWR2024A1000A	Factory Installed	Factory Installed
2TTR2030A1000A	BAYCCHT301	BAYKSKT260	2TWR2030B1000A	BAYCCHT301	BAYKSKT260
2TTR2036A1000A	BAYCCHT301	BAYKSKT260	2TWR2036A1000A	BAYCCHT301	BAYKSKT260
2TTR2042B1000A	BAYCCHT301	BAYKSKT260	2TWR2042A1000A	BAYCCHT301	BAYKSKT260
2TTR2048A1000A	BAYCCHT301	BAYKSKT260	2TWR2048A1000A	Factory Installed	BAYKSKT260
2TTR2060B1000A	BAYCCHT301	BAYKSKT260	2TWR2060A1000A	Factory Installed	BAYKSKT260
2TTR1018A1000A	BAYCCHT300	BAYKSKT261	2TWR1018A1000A	Factory Installed	BAYKSKT257
2TTR1024A1000A	BAYCCHT300	BAYKSKT261	2TWR1024A1000A	Factory Installed	BAYKSKT257
2TTR1030A1000A	BAYCCHT300	BAYKSKT257	2TWR1030A1000A	Factory Installed	BAYKSKT257
2TTR1036A1000A	BAYCCHT300	BAYKSKT257	2TWR1036A1000A	Factory Installed	BAYKSKT257
2TTR1042A1000A	BAYCCHT300	BAYKSKT257	2TWR1042A1000A	Factory Installed	BAYKSKT257
2TTR1048A1000A	BAYCCHT300	BAYKSKT257	2TWR1048A1000A	Factory Installed	BAYKSKT257
2TTR1060A1000A	BAYCCHT300	BAYKSKT257	2TWR1060A1000A	Factory Installed	BAYKSKT257

Typical wiring when using the evaporator defrost control (EDC):

Cooling Split System and AY28X079 Evaporator Defrost Control



Heat Pump Split System and AY28X084 Evaporator Defrost Control

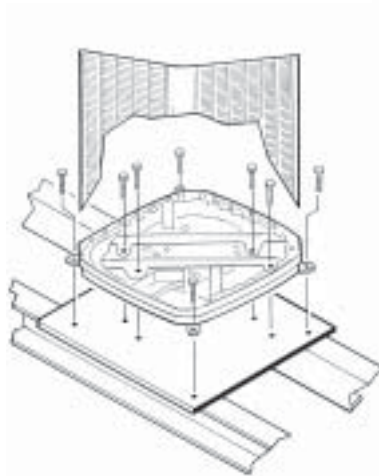
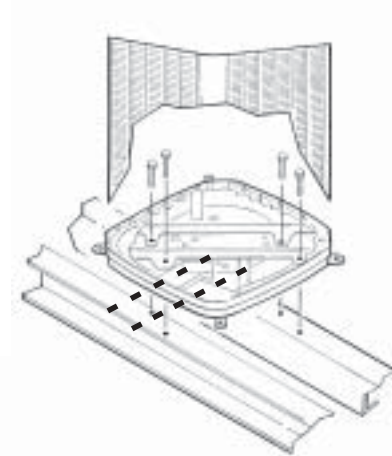
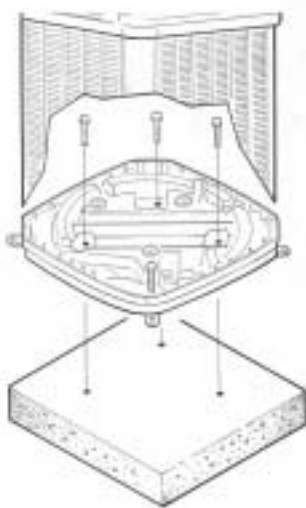


SECTION II - Unit Mounting:

This section describes appropriate methods for mounting and securing the XR. However, if these units are to be mounted in a region where high winds are an issue, please refer to the Trane BAYECMT001 extreme conditions mounting kit. In seismic zones, the unit shall be secured according to local code; this may require a local P.E.'s stamp.

When mounting or securing Trane residential style condensing units and heat pumps please observe the following.

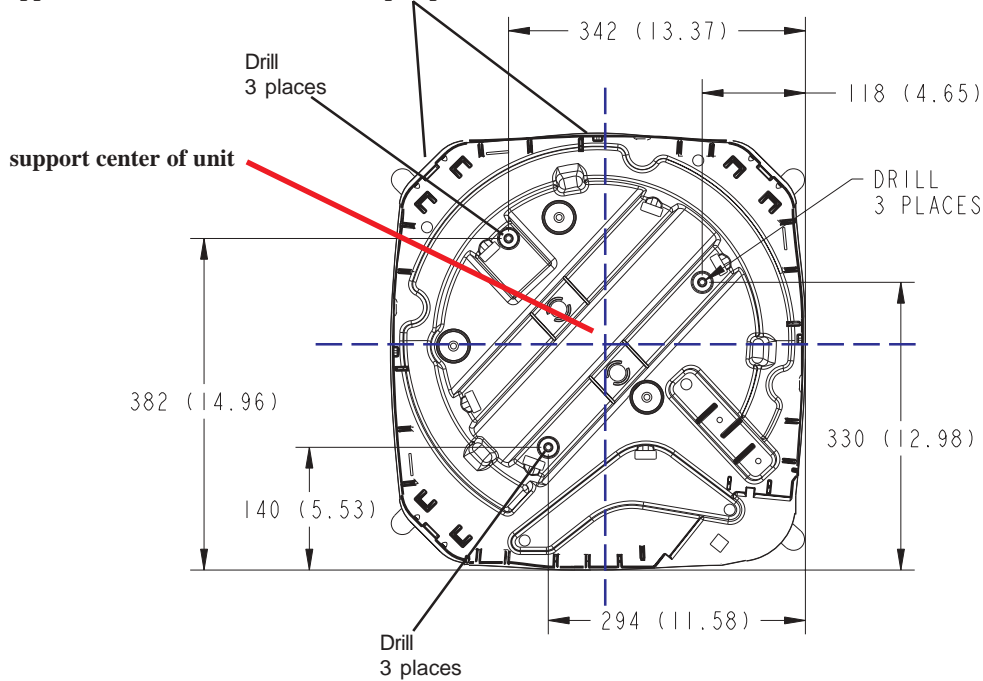
1. Anytime the unit is to be supported from the edge, the supporting material shall extend minimum two inches under the perimeter of the unit's base.
2. The mounting hole locations are molded in the basepan, however, must be drilled through.
 - a) Hole locations are identified on page 8 and 9 of this document as well as the unit installation guide.
3. Washers should be placed in between the fastener head and the basepan.
4. Trane recommends supporting the center of the unit with a cross member if unit is not mounted on plate.
5. Base 1 pans have only three mounting hole locations.
6. Base 2, 3, and 4 pans have four mounting hole locations.
7. Drill size / bolt diameter shall be 5/16".



Drawings for illustration purposes only.

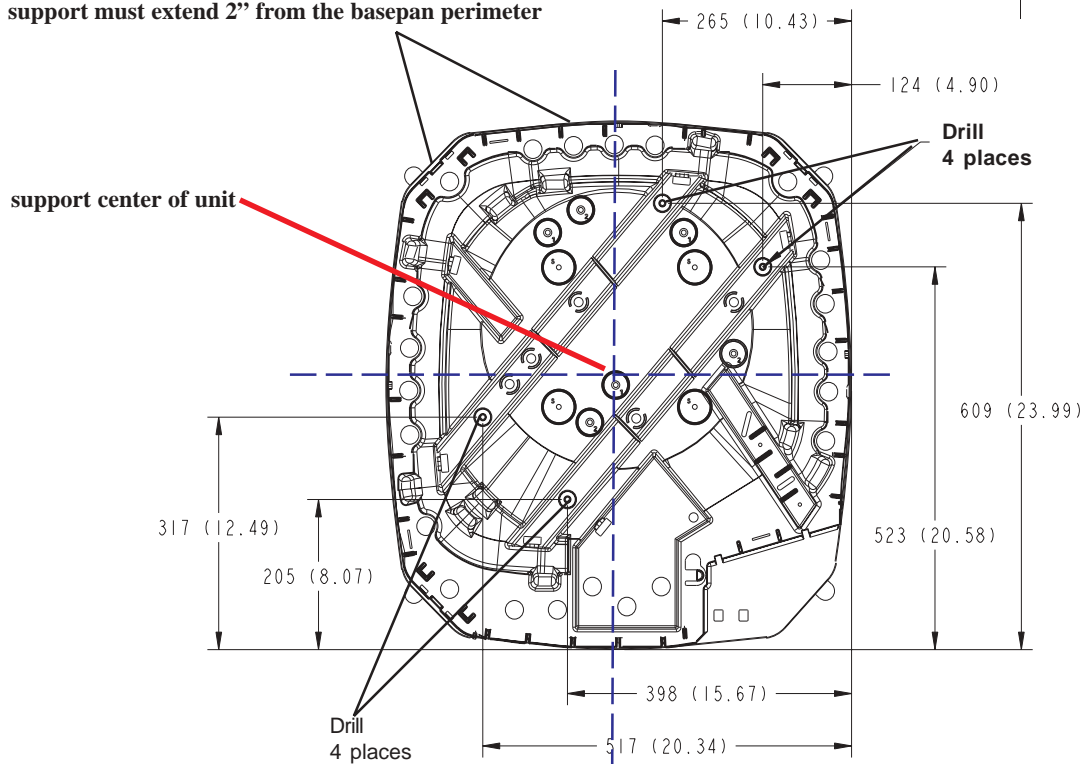
BASE PAN MOUNTING HOLE LOCATIONS (location only, holes must be drilled)

support must extend 2" from the basepan perimeter



BASE 1

support must extend 2" from the basepan perimeter



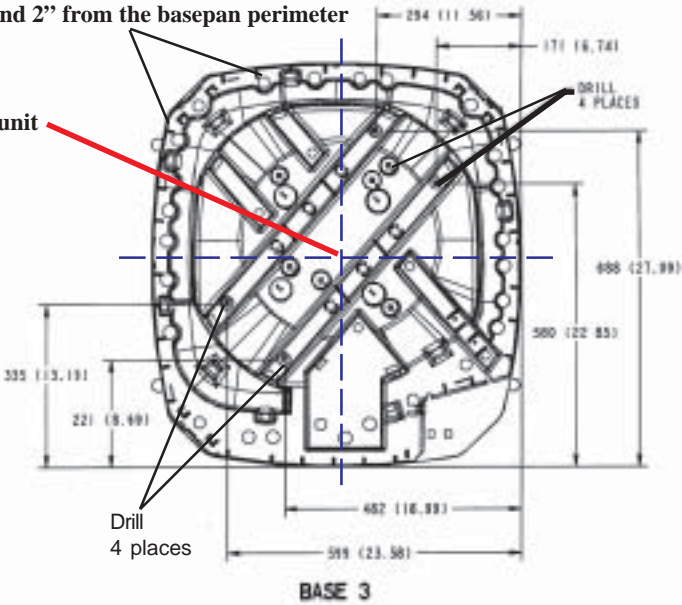
BASE 2

If supporting the base pan from the perimeter, the support must extend under the base pan at least 2". Trane recommends supporting the middle of the base pan with a cross member.

BASE PAN MOUNTING HOLE LOCATIONS (location only, holes must be drilled)

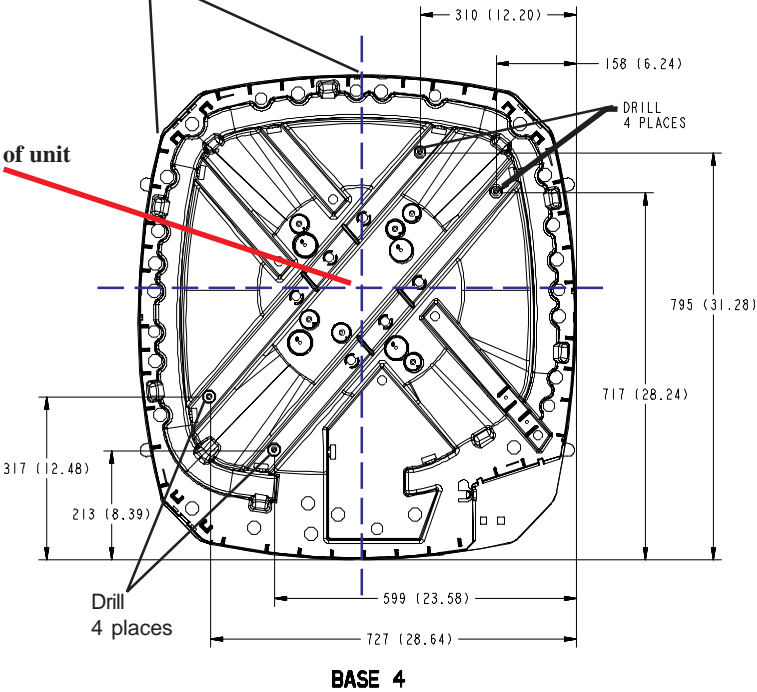
support must extend 2" from the basepan perimeter

support center of unit



support must extend 2" from the basepan perimeter

support center of unit



If supporting the base pan from the perimeter, the support must extend under the base pan at least 2". Trane recommends supporting the middle of the base pan with a cross member.

Section III - Minimum Operating Clearances

This section discusses installing the XR11 and XR12 condensing unit / heat pump where spacing is limited. When installing Trane outdoor units in a location where clearance to other units, walls, fences, etc are limited these concerns must be addressed:

1. System Operation - Adequate airflow must be provided to and away from the condensing unit / heat pump in order to enable appropriate heat transfer. If this is accomplished, head pressure will remain at an effective operating range.
2. System Servicability - Sufficient workin space must be allowed for the HVAC service technician to properly maintain the condensing unit / heat pump. Furthermore, space must be allowed for major component change out in the event of a failure. Working space is determined by the Local, State and National Codes. (See National Electric Code Table 110.26 for explanation.)
3. Space Maintenance - Appropriate area must be allowed in order to maintain the ground area where the units are positioned to prohibit debris from collecting on the panels, thus further providing unobstructed airflow to the condensing unit.
3. State, Local Codes, and National Codes shall prevail. Check with the local jurisdiction before installation to assure compliance.

Numerous projects require minimum clearances between outdoor units and adjacent walls, fences and other units. The obstruction in question is usually one of the following:

1. One or more walls of an adjacent building.
2. Fences or barriers provided to reduce sound transmission or visually screen the equipment.
3. Other outdoor units in a multi-unit installation.
4. A combination of the above.
5. Overhangs

The prime considerations involved in establishing minimum clearances are:

1. Adequate airflow to the outdoor coil with minimum recirculation.
2. Service access to the equipment.
3. Compliance with the National Electric Code and other applicable codes.
4. Design temperature - Design temperatures greater than 105F require additional consideration.

I. In order to assure that adequate airflow reaches the XR condensing unit, size free air passages at 300 Feet Per Minute maximum velocity. See condensing unit airflow performance on page 23 of this document.

II. The importance of providing proper service access to equipment cannot be overemphasized. The HVAC service technician's job may be performed with greater ease and lower cost if adequate service space is allowed.

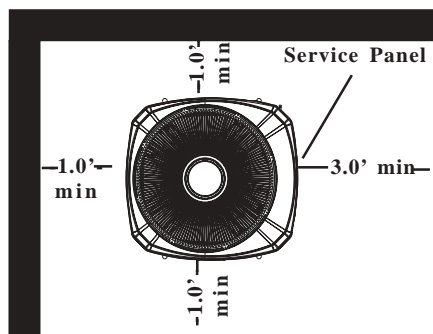
III. Knowledge of the National Electric Code and other applicable codes for the job sight location is a necessity in order to satisfy local inspectors. These codes are in place for service as well as safety.

IV. Be sure to read all provisions and footnotes contained in this document. When ambient temperatures exceed 105F, more space may be required for minimum operating clearances.

<i>Please note: Trane residential outdoor condensing units are UL listed for outdoor use only. No written or verbal approval will be provided for installation in areas which are considered indoors.</i>

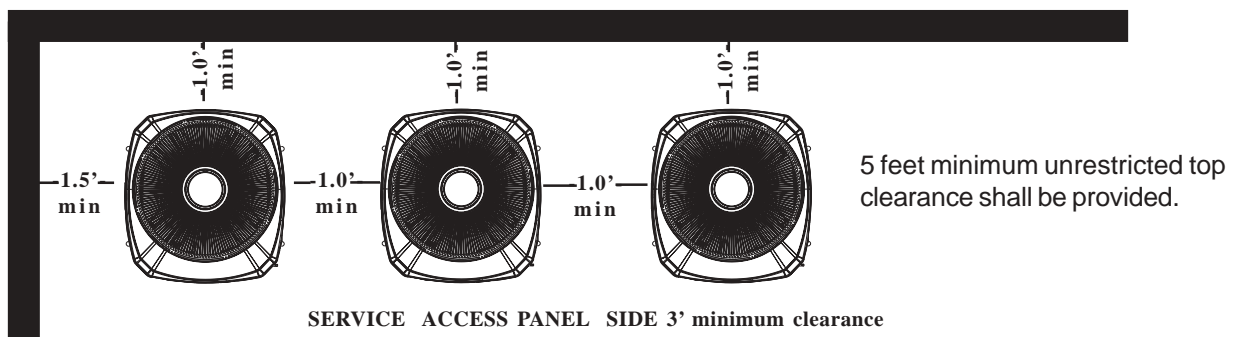
1. Installation of a single XR condensing unit / heat pump in a corner with free air space on top.

- A) For locations where the design ambient temperature is below 105F:
- 1) 1.0 feet clearance on 2 sides - If shrubbery is to be placed by the unit other side, then allow 1.0 Feet minimum clearance from the unit
 - 2) Service access side minimum 3'. Consult Local, State, and National Electric Codes for minimum service clearance.
- B) For locations where the design ambient temperature exceeds 105F:
- 1) 1.5 feet clearance on 2 walls. - If shrubbery is to be placed by the unit other side, then allow 1.0 Feet minimum clearance from the unit.
 - 2) Service access side minimum 3'
- C) If unit is located in such a way that service panel is facing the wall
- 1) NEC requires minimum 3 feet between the unit and the wall
 - a) This space may be increased to 3 1/2 feet. Consult the National Electric Code for more information regarding minimum clearances for working spaces.



2. Installation of two or more XR units where two adjacent walls form a corner.

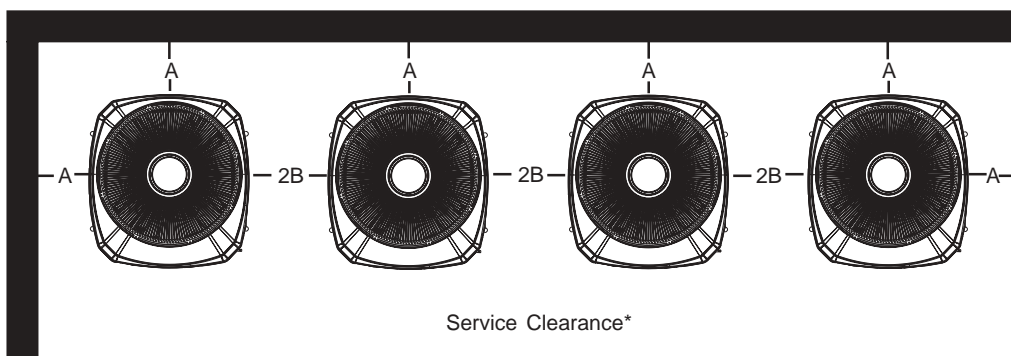
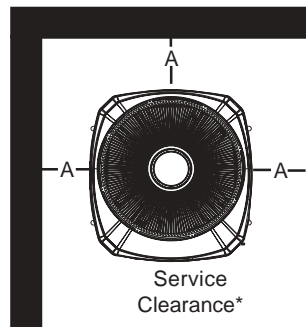
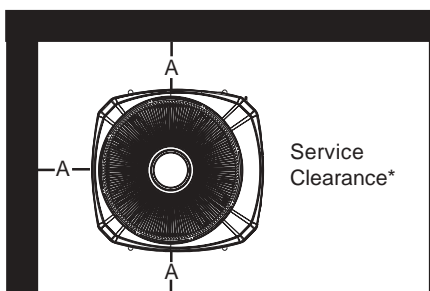
- A) For locations where the design ambient temperature is below 105F:
- 1) Corner unit shall have 1.5 feet clearance from side wall and 1.0 feet clearance from back wall.
 - 2) 1 feet clearance in between units, unless service panels face each other. (if service panels face each other, this clearance may be increased to 4 feet per NEC)
- B) **For locations where the design ambient temperature exceeds 105F:**
- 1) 2.0 feet clearance from both walls.
 - 2) 2 feet clearance in between units, unless service panels face each other. (if service panels face each other, this clearance may be increased to 4 feet per NEC)
- C) If unit's are located in such a way that the service panels are facing the wall
- 1) NEC requires minimum 3 feet between the unit and the wall
 - a) This space may be increased to 3 1/2 feet. Consult the most current edition of the National Electric Code for more information regarding minimum clearances for working spaces.



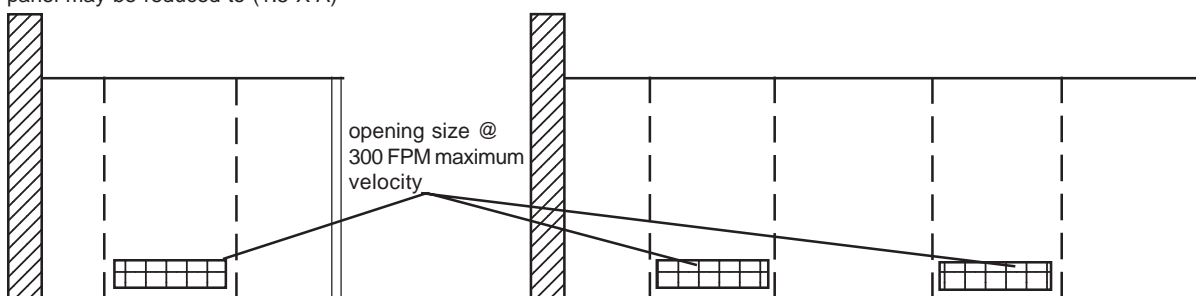
3. Units surrounded on all four sides:

A. If installed unit(s) is / are surrounded by 2 walls and a solid fence, fence height on two sides shall be no higher than the height of the unit. In this application knockouts or louvers shall be provided on two sides minimum with free area to provide maximum 300 FPM velocity. Cutting a portion of the lower fence on two sides to accomplish 300 FPM maximum velocity is acceptable provided debris, dirt, and grass is prohibited from accumulating or growing to obstruct the opening. Refer to page 18 of this document for outdoor unit airflow. Please refer to table below for minimum clearances.

5 feet minimum top clearance shall be provided.



* If removable panels are used and acceptable to local inspection agency, the clearance to the removable panel may be reduced to (1.5 X A)



Single Unit - Solid Fence

Multiple Units Solid Fence

Solid Fence: If fence height is taller than unit(s), provide openings in fence that will provide maximum 300 FPM air velocity. These openings shall be located at the lower portion of the fence. If acceptable, the fence may be raised to provide open bottom clearance of fence height above the unit.

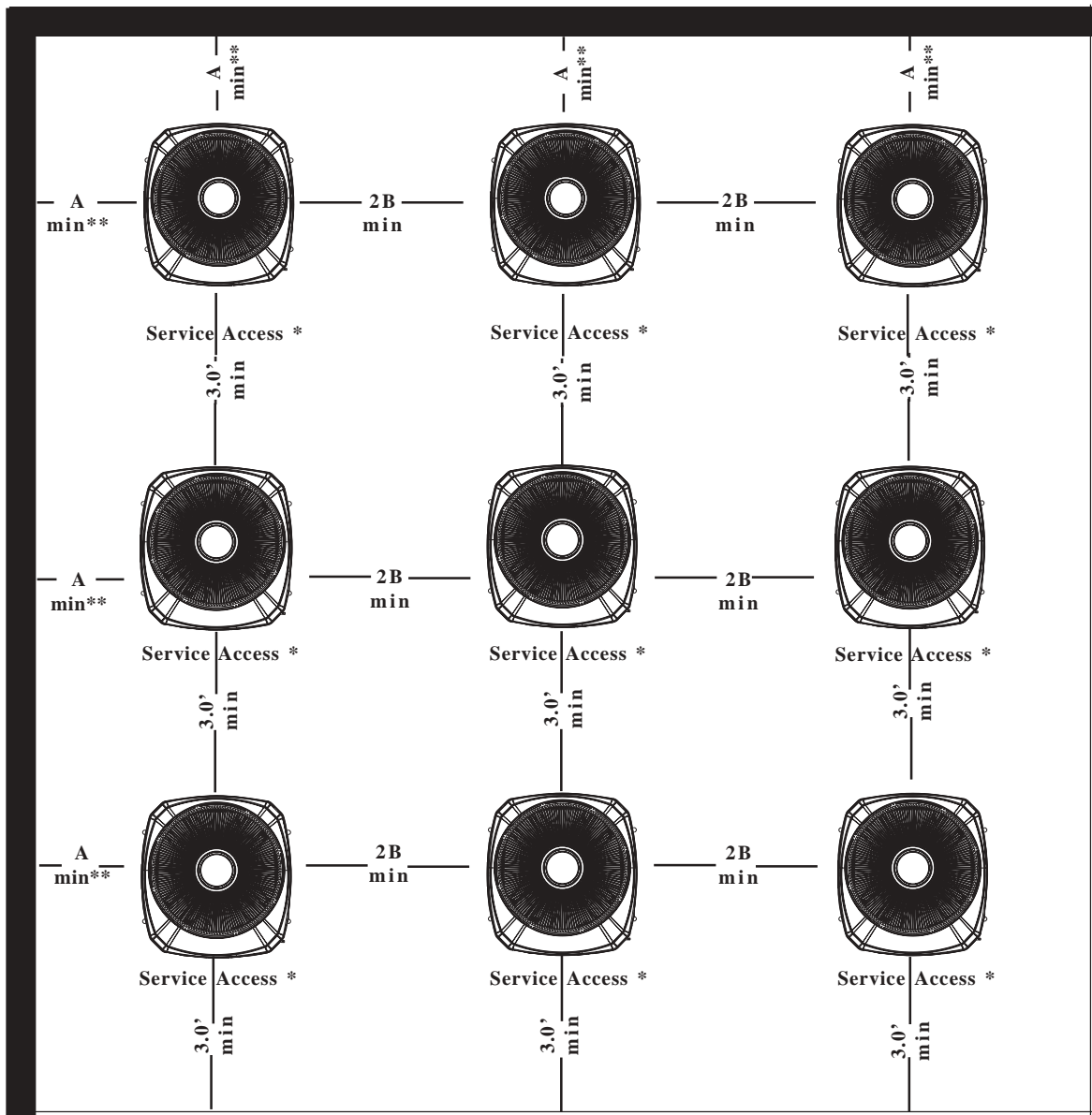
These clearances apply in geographical locations in which the maximum design outdoor dry bulb = 105F or less.

Minimum Clearances

Base Size	A	B	Service Clearance
1	1'	6"	36"*
2	1'	7"	36"*
3	1'	8"	36"*
4	1'	9"	36"*

4. Installation of multiple units on a pad or rooftop where the top clearance is open.

- A) Refer to minimum clearance table in the lower corner of this page for clearances
- B) National Electric Code requires 3 feet minimum (4 feet if certain conditions are present) clearance between service access panel and adjacent unit. If service access panel faces the wall, the required space between the the wall and the unit shall be minimum 3 feet. (May require as much as 3 1/2 feet)
- C) Walls shall not be higher than top of units.
- D) National, State, and Local Codes must be observed.



* Units may be rotated, as shown on the following page, in order that service access sides face each other provided that 3 feet minimum clearance be maintained between the units. In order to comply with NEC, this may increase to 4 feet minimum clearance.

** If wall or fence is to be constructed around the entire perimeter of the mechanical yard, Maintain minimum 1.5 feet clearance from the units. The fence height shall not exceed that of the unit. It is recommended to install louvers in the fence to allow no greater than 300 feet per minute velocity. Consult the table on page 18 for unit airflow. Place louvers in the lower section of the fence by each unit in order to provide air access to each unit located by the fence. The lower portion of the fence may also be cut in order to equal the calculated free area.

Clearances apply to geographical areas where the design outdoor dry bulb = 105 F or less

Base Size	A	B	Service Clearance
1	1'	6"	36"*
2	1'	7"	36"*
3	1'	8"	36"*
4	1'	9"	36"*

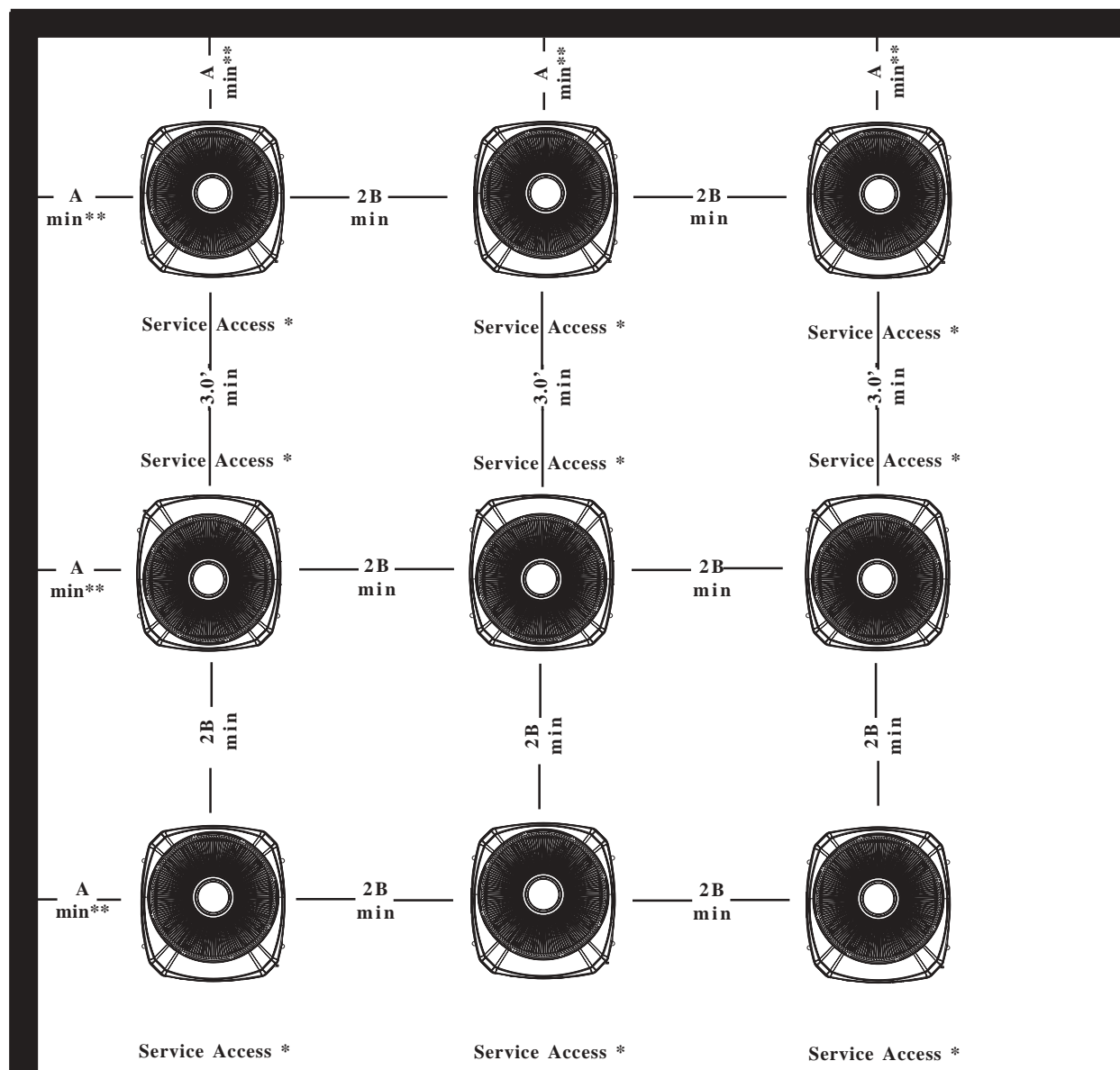
4. Installation of multiple units on a pad or rooftop where the top clearance is open.

A) Refer to minimum clearance table in the lower corner of this page for required clearances

B) National Electric Code requires 3 feet minimum (4 feet if certain conditions are present) clearance between service access panel and adjacent unit. If service access panel faces the wall, the required space between the wall and the unit shall be minimum 3 feet. (May require as much as 3 1/2 feet)

C) Walls / Fence height shall not be higher than top of units.

D) National, State, and Local Codes must be observed.



* Units may be rotated as shown on above, in order that service access sides face each other provided that 3 feet minimum clearance be maintained between the units. In order to comply with NEC, this may increase to 4 feet minimum clearance.

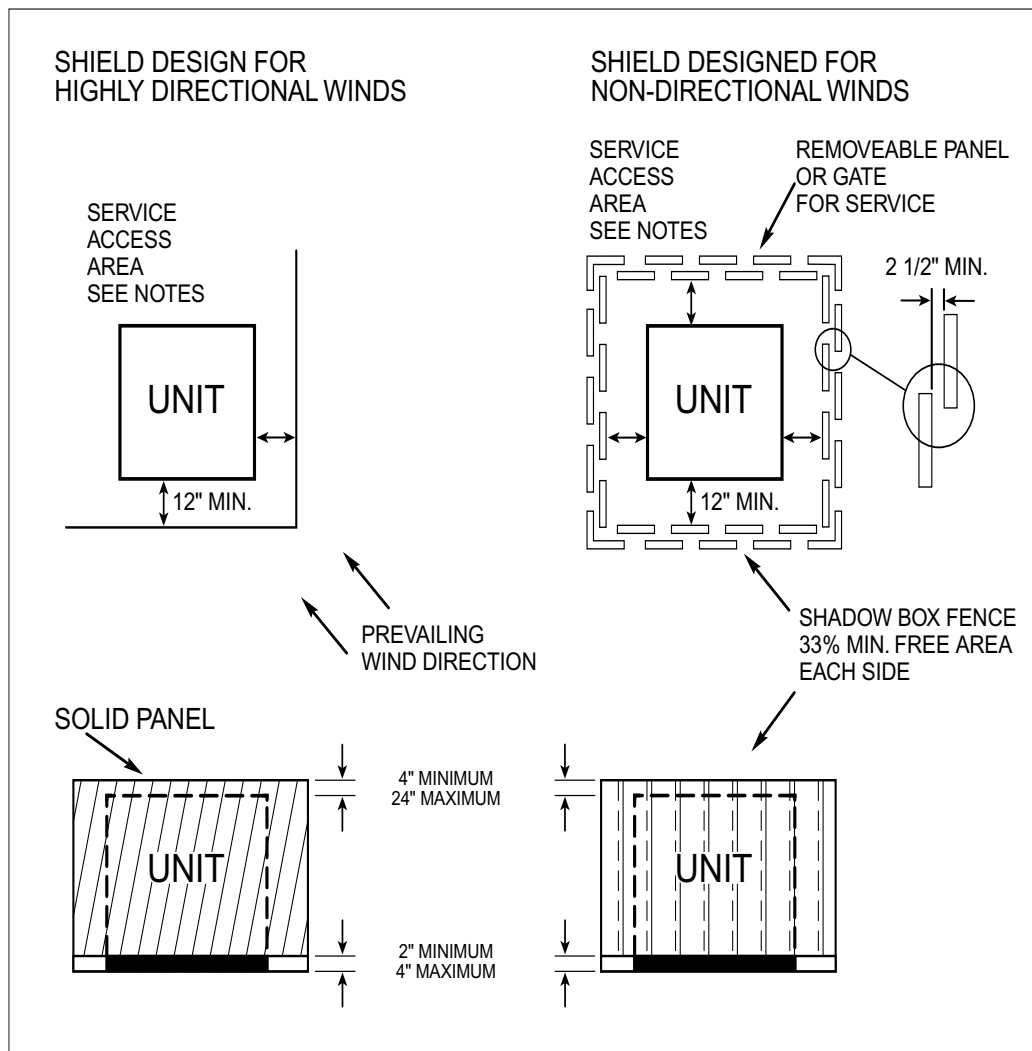
** If wall or fence is to be constructed around the entire perimeter of the mechanical yard, Maintain minimum 1.5 feet clearance from the units. The fence height shall not exceed that of the unit. It is recommended to install louvers in the fence to allow no greater than 300 feet per minute velocity. Consult the table on page 18 for unit airflow. Place louvers in the lower section of the fence by each unit in order to provide air access to each unit located by the fence. The lower portion of the fence may also be cut in order to equal the calculated free area.

Clearances apply to geographical areas where the design outdoor dry bulb = 105 F or less

Base Size	A	B	Service Clearance
1	1'	6"	36"
2	1'	7"	36"
3	1'	8"	36"
4	1'	9"	36"

Windshields:

If low ambient operation to 0F is required, windshields are a must in order to block prevailing winds from impacting system performance at low outdoor temperatures.



Note:

Minimum working clearance must be in compliance with the National Electric Code. Currently, the minimum clearance between a wood or suitable grounding material type fence requires minimum 3 feet. If other material is used to form the windshield, the minimum space may be increased to 3.5 feet. Please consult the 2002 or current Edition of the National Electric Code, Article 110 for the most up to date information

Electrical Code Information

Compliance with Local, State, and National Codes is a must on every HVAC Installation. This page discusses the criteria regarding minimum working spaces as defined in the 2002 National Electric Code. The main concern is the safety of the HVAC service / maintenance person. Minimum working clearances are specified in the National Electric Code (NEC) Article 110.26

For electrical equipment that from ground to power the voltage is 600 volts or less:

The National Electric Code specifically states that service area around electrical equipment shall provide sufficient access, and shall be properly maintained in order to permit safe operation and maintenance of the equipment. Table 110.26 as well as the figures beside the table describe the minimum clearance for proper service and access to electrical equipment.

Trane residential and light commercial condensing units ranging from 1 to 6 ton require access to the side service panel as indicated on the previous pages to gain access to the electrical controls.

The table and figure below are excerpts from the National Electric Code 2002:

Table 110.26(A)(1) Working Clearances

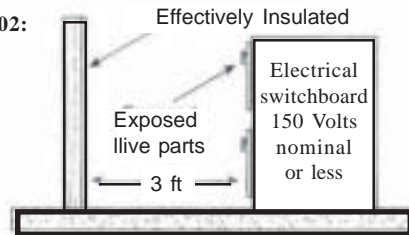
Nominal Voltage to Ground	Minimum Clear Distance		
	Condition 1	Condition 2	Condition 3
0-150	900 mm (3 FT)	900 mm (3 FT)	900 mm (3FT)
151-600	900 mm (3FT)	1 M (3.5FT)	1.2 mm (4FT)

Note: Where the conditions are as follows

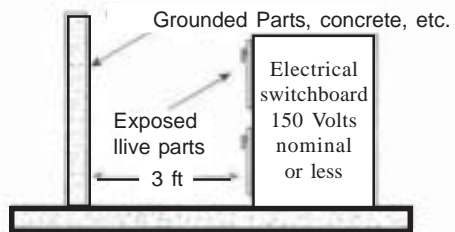
Condition 1 - Exposed live parts on one side and no live or grounded parts on the other side of the working space, or exposed live parts on both sides effectively guarded by suitable wood or other insulating materials. Insulated wire or insulated busbars operating at not over 300 volts to ground shall not be considered live parts

Condition 2 - Exposed live parts on one side and grounded parts on the other side. Concrete, brick, or tile walls shall be considered as grounded.

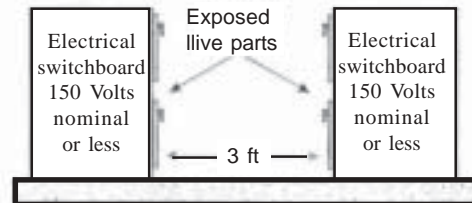
Condition 3 - Exposed live parts on both sides of the work space (not guarded as provided in Condition 1) with the operator between.



Condition 1
(3 ft min. for 151 - 600 V)



Condition 2
(Space would increase to 3 1/2 ft for 151 - 600 V)

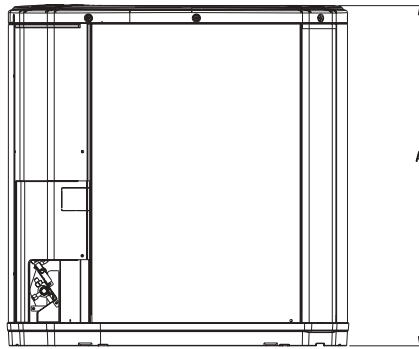
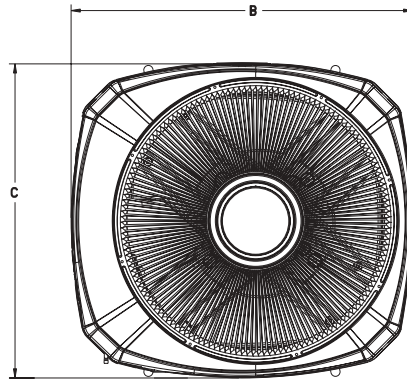


Condition 3
(Space would increase to 4 ft for 151 - 600 V)

Reprinted with permission from NFPA 70-2002, National Electrical Code®, Copyright © 2001, National Fire Protection Association. This reprinted material is not the complete and official position of the NFPA on the referenced subject, which is represented only by the standard of it's entirety.

National Electrical Code and NEC are registered trademarks of the National Fire Protection Association, Quincy, MA.

Unit Dimensions



COOLING UNITS					HEAT PUMP UNITS				
MODEL	BASE	A	B	C	MODEL	BASE	A	B	C
2TTR1018A 2TTR1024A	1	648 (25 1/2)	502 (19 3/4)	476 (18 3/4)	2TWR1018A 2TWR1024A 2TWR2018A	2	651 (25 5/8)	724 (28 1/2)	651 (25 5/8)
2TTR1030A 2TTR1036A 2TTR2018A	2	651 (25 5/8)	724 (28 1/2)	651 (25 5/8)	2TWR1030A 2TWR1036A 2TWR2024A	2	730 (28 3/4)	724 (28 1/2)	651 (25 5/8)
2TTR1042A 2TTR1048A 2TTR2024A 2TTR2030A	2	730 (28 3/4)	724 (28 1/2)	651 (25 5/8)	2TWR2030B	2	832 (32 3/4)	724 (28 1/2)	651 (25 5/8)
2TTR2036A	2	832 (32 3/4)	724 (28 1/2)	651 (25 5/8)	2TWR1042A 2TWR1048A 2TWR2036A 2TWE2042A 4TWR2018A 4TWR2024A 4TWR2030A 4TWR2036A	3	832 (32 3/4)	829 (32 5/8)	756 (29 3/4)
2TTR2042B 4TTR2018A 4TTR2024A 4TTR2030A 4TTR2036A	3	832 (32 3/4)	829 (32 5/8)	756 (29 3/4)	2TWR2048A	3	933 (36 3/4)	829 (32 5/8)	756 (29 3/4)
2TTR1060A 2TTR2048A 4TTR2042A	3	933 (36 3/4)	829 (32 5/8)	756 (29 3/4)	4TWR2042A	3	1035 (40 3/4)	829 (32 5/8)	756 (29 3/4)
4TTR2048A	3	1035 (40 3/4)	829 (32 5/8)	756 (29 3/4)	2TWR1060A 4TWR2048A	4	841 (33 1/8)	946 (37 1/4)	870 (34 1/4)
4TTR2060A	4	832 (32 3/4)	946 (37 1/4)	870 (34 1/4)	4TWR2060A	4	1045 (41 1/8)	946 (37 1/4)	870 (34 1/4)
2TTR2060B	4	1045 (41 1/8)	946 (37 1/4)	870 (34 1/4)					

*Table produced March 2004 . For the most current information, please refer to specific equipment Product Data.

XR Outdoor Unit Airflow Table					
XR12 R410A		XR12 R-22		XR11	
Unit Model Number	CFM	Unit Model Number	CFM	Unit Model Number	CFM
4TTR2018A1000A	2700	2TTR2018A1000A	1600	2TTR1018A1000A	1450
4TTR2024A1000A	2700	2TTR2024A1000A	2500	2TTR1024A1000A	1475
4TTR2030A1000A	3350	2TTR2030A1000A	2500	2TTR1030A1000A	2550
4TTR2036A1000A	3250	2TTR2036A1000A	2500	2TTR1036A1000A	2500
4TTR2042A1000A	3200	2TTR2042B1000A	2700	2TTR1042A1000A	2475
4TTR2048A1000A	3400	2TTR2048A1000A	3400	2TTR1048A1000A	2475
4TTR2060A1000A	4250	2TTR2060B1000A	4275	2TTR1060A1000A	3400
4TWR2018A1000A	2700	2TWR2018A1000A	1600	2TWR1018A1000A	1575
4TWR2024A1000A	2700	2TWR2024A1000A	2000	2TWR1024A1000A	2175
4TWR2030A1000A	3300	2TWR2030B1000A	2600	2TWR1030A1000A	2475
4TWR2036A1000A	3300	2TWR2036A1000A	3325	2TWR1036A1000A	2475
4TWR2042A1000A	3700	2TWR2042A1000A	3325	2TWR1042A1000A	3325
4TWR2048A1000A	4400	2TWR2048A1000A	3700	2TWR1048A1000A	3700
4TWR2060A1000A	4550	2TWR2060A1000A	4400	2TWR1060A1000A	4400

$$\text{Required Opening} = \text{CFM} / 300 \text{ FPM}$$

Example:

Given:

Qty of 4 units in a mechanical yard, surrounded by a fence. Units are 2TWR2060A100A's -

Required:

Determine free air opening space required in fence -

Solution:

4400 CFM X Qty of 4 = 17,600 CFM

17600 CFM / 300 FPM = 58.67 square feet

Round 58.67 to 59 square feet of free air opening in the 4 fence sections surrounding the mechanical yard.

NOTES

[illegible]



It's Hard To Stop A Trane.®

Trane
6200 Troup Highway
Tyler, TX 75707
<http://www.trane.com>

Literature Order Number		
File Number	XR-APG05-EN	09/23
Supersedes	XR-APG04-EN	03/04
Stocking Location		

Since Trane has a policy of continuous product improvement, it reserves the right to change design and specifications without notice